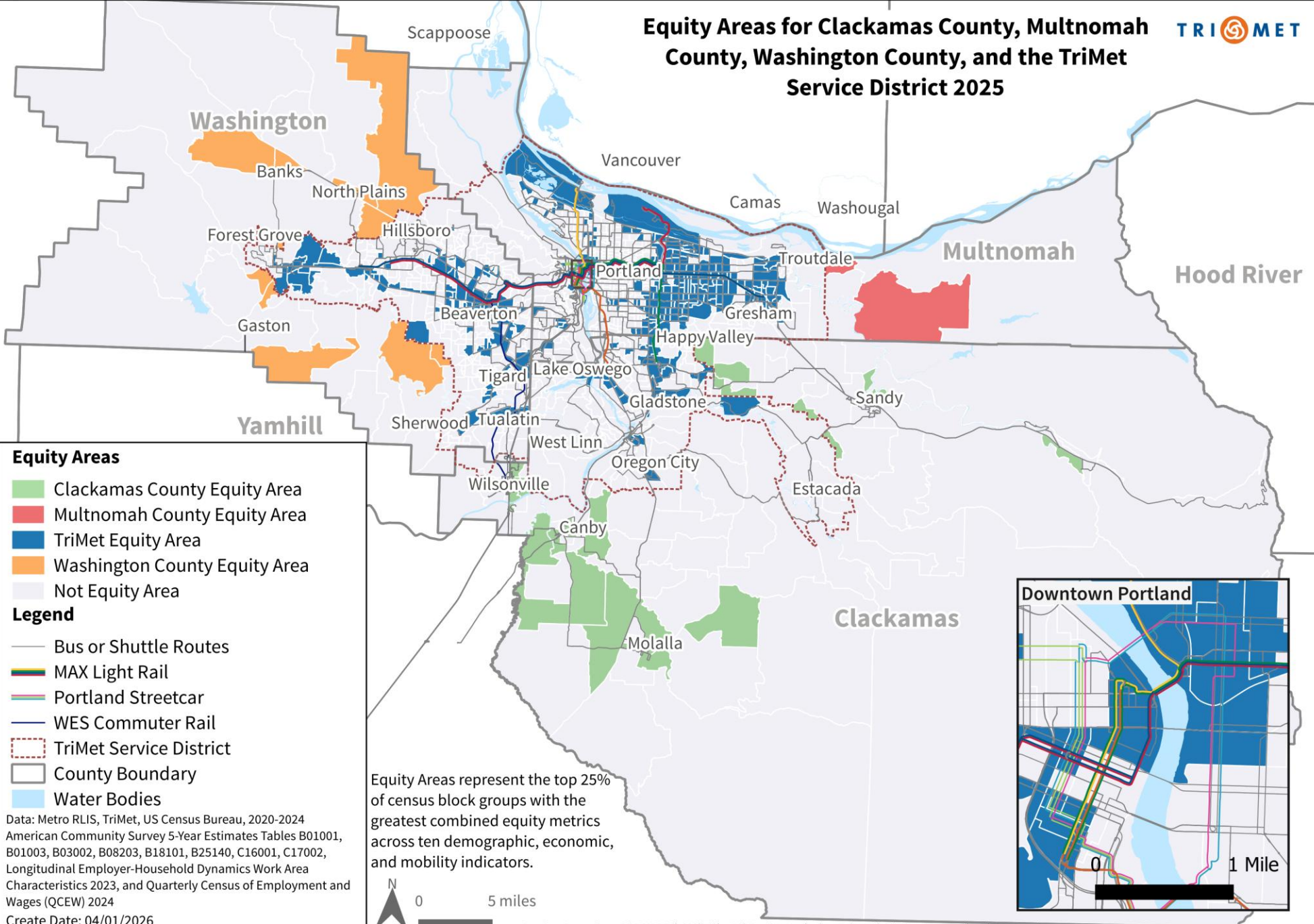


Equity Areas for Clackamas County, Multnomah County, Washington County, and the TriMet Service District 2025



Equity Areas

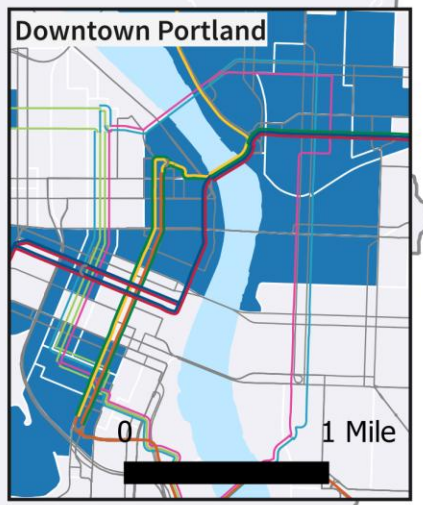
- Clackamas County Equity Area
- Multnomah County Equity Area
- TriMet Equity Area
- Washington County Equity Area
- Not Equity Area

Legend

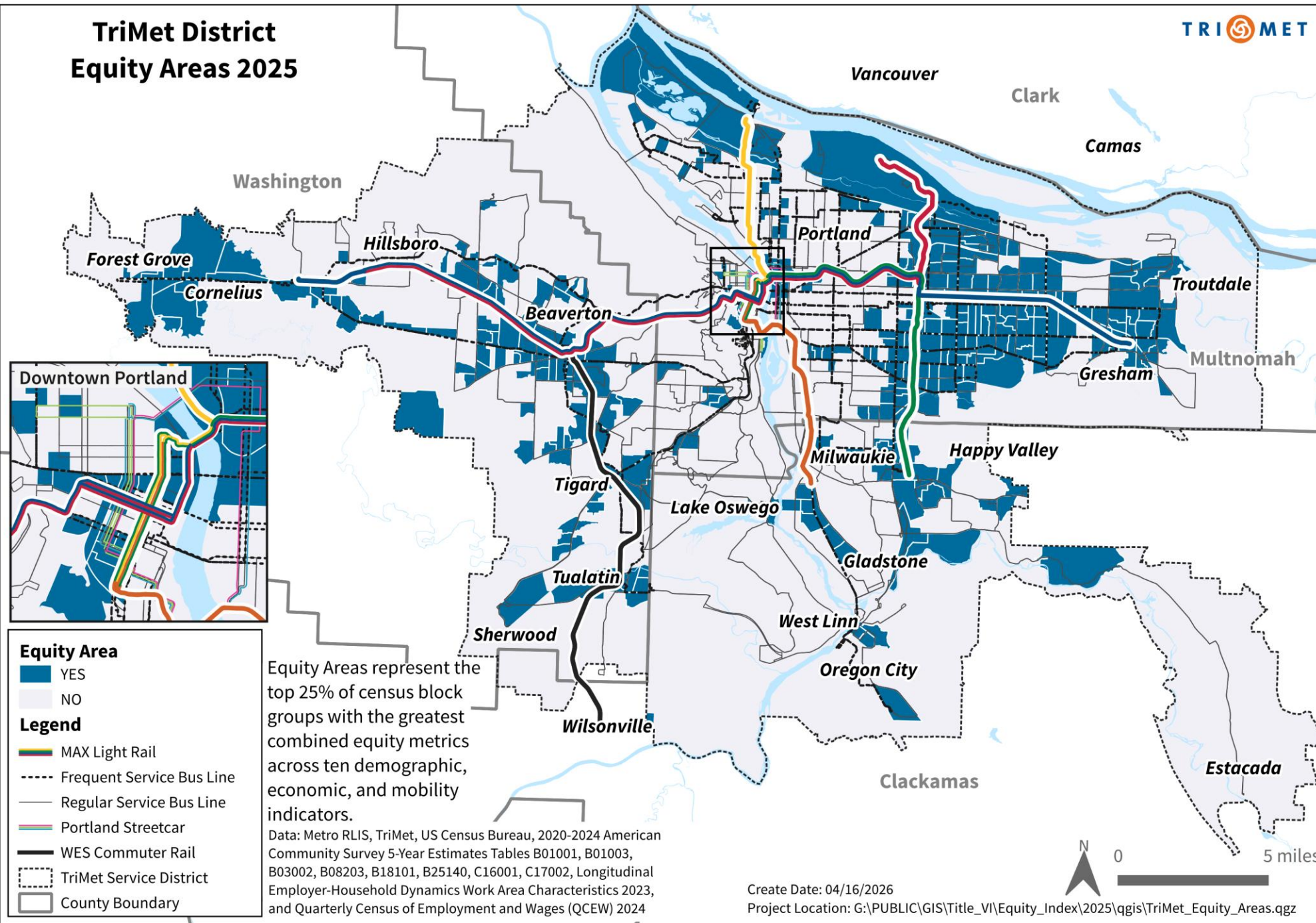
- Bus or Shuttle Routes
- MAX Light Rail
- Portland Streetcar
- WES Commuter Rail
- TriMet Service District
- County Boundary
- Water Bodies

Data: Metro RLIS, TriMet, US Census Bureau, 2020-2024 American Community Survey 5-Year Estimates Tables B01001, B01003, B03002, B08203, B18101, B25140, C16001, C17002, Longitudinal Employer-Household Dynamics Work Area Characteristics 2023, and Quarterly Census of Employment and Wages (QCEW) 2024
 Create Date: 04/01/2026

Equity Areas represent the top 25% of census block groups with the greatest combined equity metrics across ten demographic, economic, and mobility indicators.



TriMet District Equity Areas 2025



Equity Area

- YES
- NO

Legend

- MAX Light Rail
- Frequent Service Bus Line
- Regular Service Bus Line
- Portland Streetcar
- WES Commuter Rail
- TriMet Service District
- County Boundary

Equity Areas represent the top 25% of census block groups with the greatest combined equity metrics across ten demographic, economic, and mobility indicators.

Data: Metro RLIS, TriMet, US Census Bureau, 2020-2024 American Community Survey 5-Year Estimates Tables B01001, B01003, B03002, B08203, B18101, B25140, C16001, C17002, Longitudinal Employer-Household Dynamics Work Area Characteristics 2023, and Quarterly Census of Employment and Wages (QCEW) 2024

